

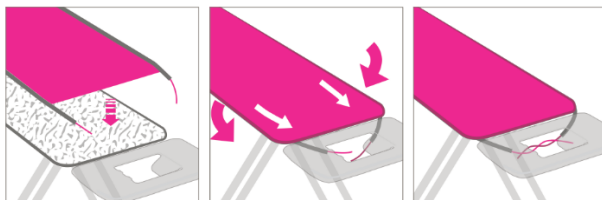
EN

Place the cover onto the ironing board; pull the ends of the cord a few centimetres out of the edging tape.

Pull the two ends of the cord downwards, so that the cover closes round the shape of the ironing board.

Pull the ends of the cord tightly until the cover is firmly positioned round the edges of the ironing board.

Art: C 34, C42, C48, C34F3, C42F3, C48F3



Art: DC 34 DC 42, DC 48, DC 34F3, DC 42F3, DC48F3, DC34 F3M, DC 42F3M, DC48F3M, DC34F3R, DC42F3R, DC48F3R

